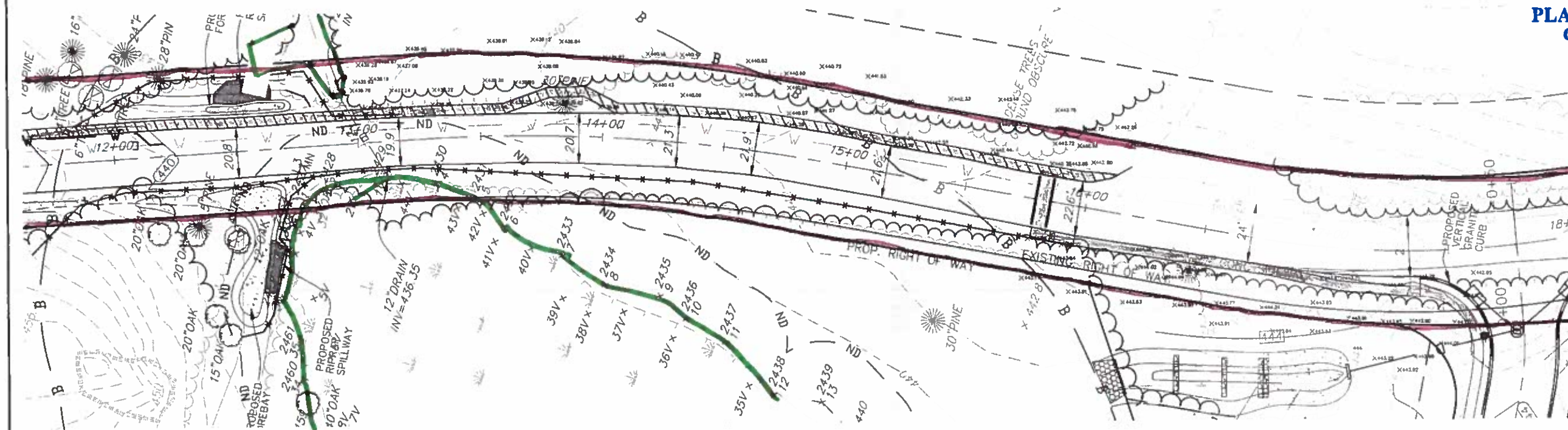


RECEIVED

AUG - 9 2017

**PLANNING BOARD
GRAFTON, MA**



NO.	DATE	REV.	PER COMMENTS	BY
1	10/20/16	1	NETLAND PLATS ADDED	PLM
2	9/21/17	2	REV PER COMMENTS	PLM
3	8/28/17	3	REV PER COMMENTS	PLM

OWNER / APPLICANT
D&F AFONSO BUILDERS, INC.
189 MAIN STREET
MILFORD, MA 01757

PROPOSED SIDEWALK DETAIL
"THE VILLAGE AT INSTITUTE ROAD"
DEFINITIVE CONVENTIONAL DEVELOPMENT PLAN
GRAFTON, MASS
SEPTEMBER 18, 2016
SCALE: 1"=30'

Guerriere & Halnon, Inc.
Engineering & Land Surveying
1029 PROVIDENCE ROAD, WATTSVILLE, MA 01568
PHONE: (508) 254-8834 FAX: (508) 254-8723
WWW.GUERRIEREANDHALNON.COM